

Install Orthanc with Synology Nas

Tested with DSM 6.1.1 on Synology DS216+II (should work with all synology devices with DSM6+)

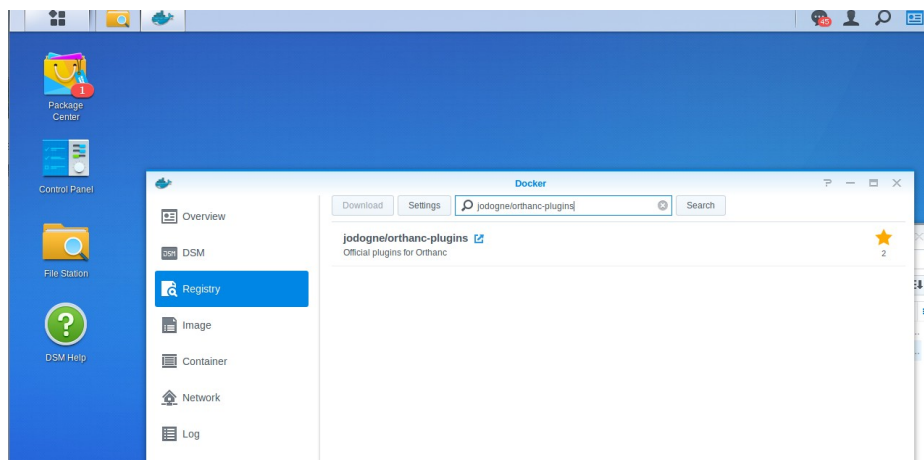
- 1) Prepare a folder in your NAS for Orthanc
Create a directory for Orthanc : for example create /docker/Orthanc with File station
Put the orthanc.json ([download here](#) and rename it) in this folder, using the file station
- 2) Install Docker
Go to the official package manager of Synology and download Docker package

- 3) Download containers of Docker and postgresQL

Open Docker and go to « registry » tab

Search for “jodogne/orthanc-plugins” (or osimis/orthanc-webviewer-plugin), select and download the latest version

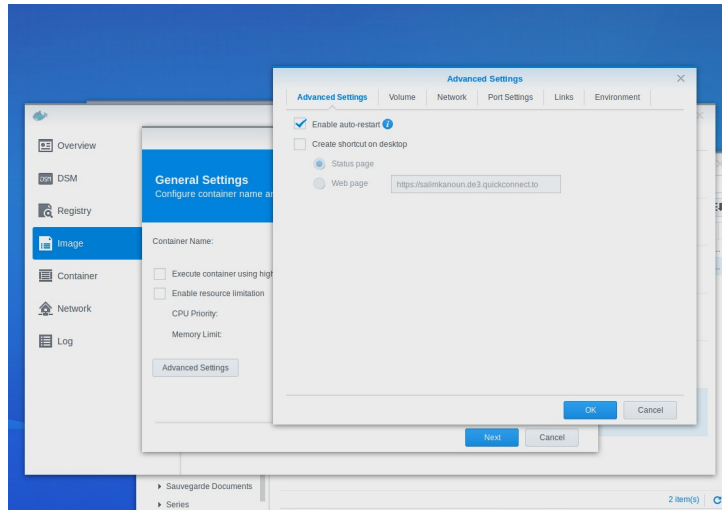
Search for “postgres”, select and download the latest version



4) Settings of the containers

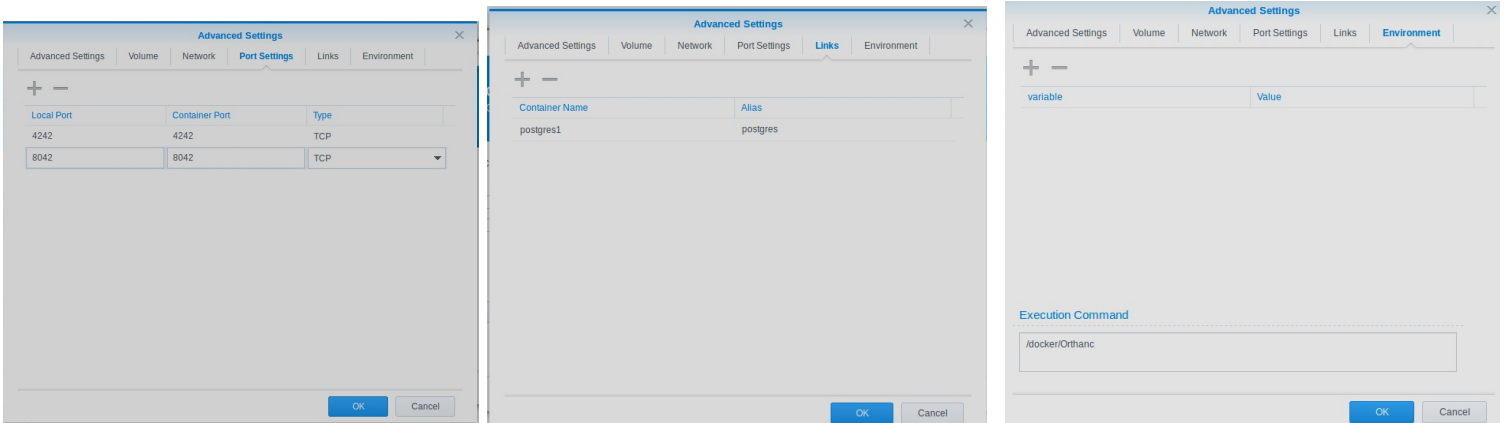
Go to the “Image” tab, select each container and click “launch”. A settings panel will open for the first run, configure it as follow :

- a. Postgresql
Go to advanced option
 - Activate auto-restartValidate



- b. Orthanc
Go to advanced option
 - Activate auto-reload
 - Add your file system (set in step 1, here /docker/Orthanc) in the volume menu
 - Add 8042 and 4242 port in the ports menu (internal and external)
 - Add the postgres container in the link tab
 - Edit the execution command in the environment tab to point your local directory (where the orthanc.json is stored) :

Validate and start Orthanc container



- 5) Check that Orthanc and Postgres container are running
Go to "container" and check that both container are running.
At this stage you should be able to reach orthanc with the address :
`http://{IpOfYourNAS}:8042`
- 6) Edit your settings.json to use postgres as database (and make your personal settings)

To store the data into postgres you have to edit the orthanc.json (here in /docker/Orthanc/) as follow :

```
"PostgreSQL" : {  
  "EnableIndex" : true,  
  "EnableStorage" : true, //Or False  
  "Host" : "postgres", //Note here that the postgres is called by the container  
  name you used as Alias in the link tab at step 4b  
  "Port" : 5432,  
  "Database" : "postgres",  
  "Username" : "postgres",  
  "Password" : "postgres"  
},
```

Feel free to change all settings you want (use the file station to download, update and upload the new version of orthanc.json)

Salim Kanoun
salim.kanoun@gmail.com
<http://petctviewer.org>